

Spring Tee

Conceald Gird System

The Libra Systems Spring Tee concealed suspension system is designed to meet the increasing demand for metal pan tile ceilings. The system can be used in conjunction with a range of metal tiles enabling designers and architects meet their client's needs.

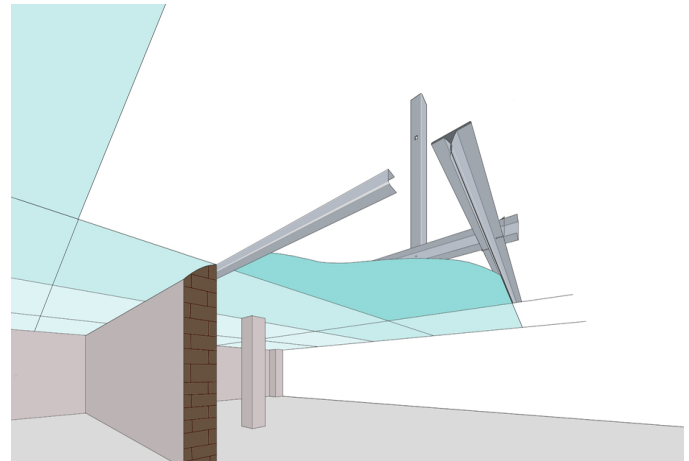
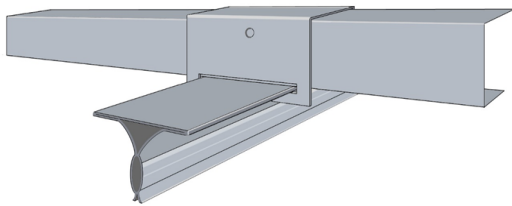
Full Spring Tee is tested during the manufacturing process to ensure the 'Pull-out' and 'Push-in' pressure provides the optimum grip for metal tile insertion and demountability.

The principle components are manufactured using pre-galvanised mild steel to BS EN 10346 2009.

The system can be suspended using wire, rigid angle or strap hangers. Suspension hangers should not exceed 1200mm of span across the primary channel. Perimeter trims or channels should be securely fixed a 450mm centres. Under normal circumstances primary channels should be spaced 1200mm apart.

Spring Tee Ceiling System has been successfully Fire Tested and has attained BS 476 Part 20 1987 for a period of 1 hour.

Suspension using direct Suspension Bracket



For further information please contact technical@librasystemsuk.com

Unit E, Halesfield 10, Telford, Shropshire TF7 4QP
T: 01952 581150 F: 01952 585147 E: sales@librasystemsuk.com
www.librasystemsuk.com