



Libra Systems

Encasement System Shaftwall

Details

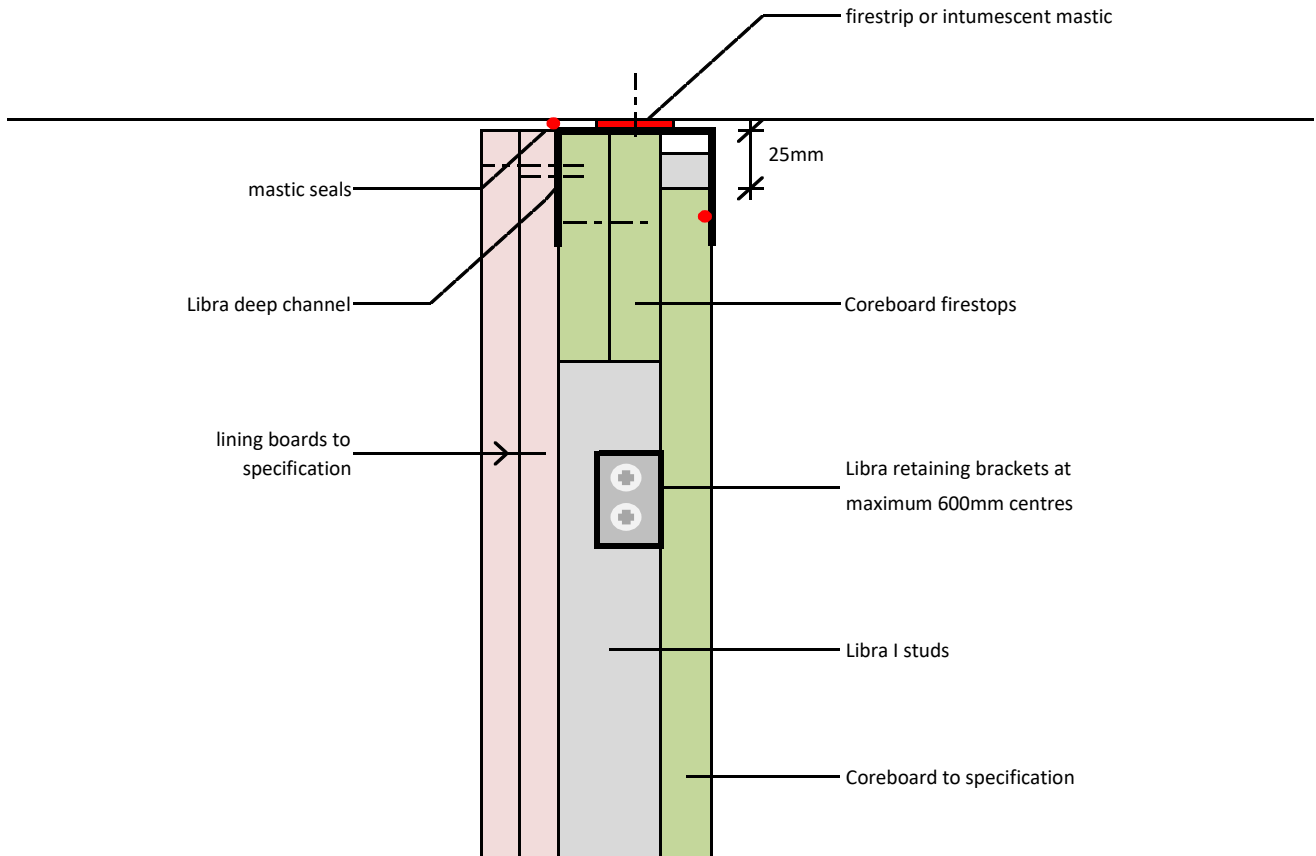


Index

Encasement System (Shaftwall)

ML/TYP/040	head detail / no deflection head
ML/TYP/041	head detail 15mm deflection head
ML/TYP/042	base detail
ML/TYP/043	internal corner detail
ML/TYP/044	external corner detail
ML/TYP/045	abutment detail (start)
ML/TYP/046	abutment detail (end)
ML/TYP/047	T junction detail (shaft side)
ML/TYP/048	T junction detail (room side)
ML/TYP/049	horizontal joint detail
ML/TYP/050	door jamb detail
ML/TYP/051	door head detail
ML/TYP/052	duct opening detail (section)
ML/TYP/053	duct opening detail (plan)

Libra shaftwall
head detail (no deflection)



Notes: This drawing should be read in conjunction with the relevant sections of the manufacturers current product literature we would draw your attention to the Construction (Design and Management) Regulations 1994 and the Approved Code of Practice which detail the legal duties of clients, client's agents designers and contractors involved in construction projects.

for discussion purposes only, do not scale



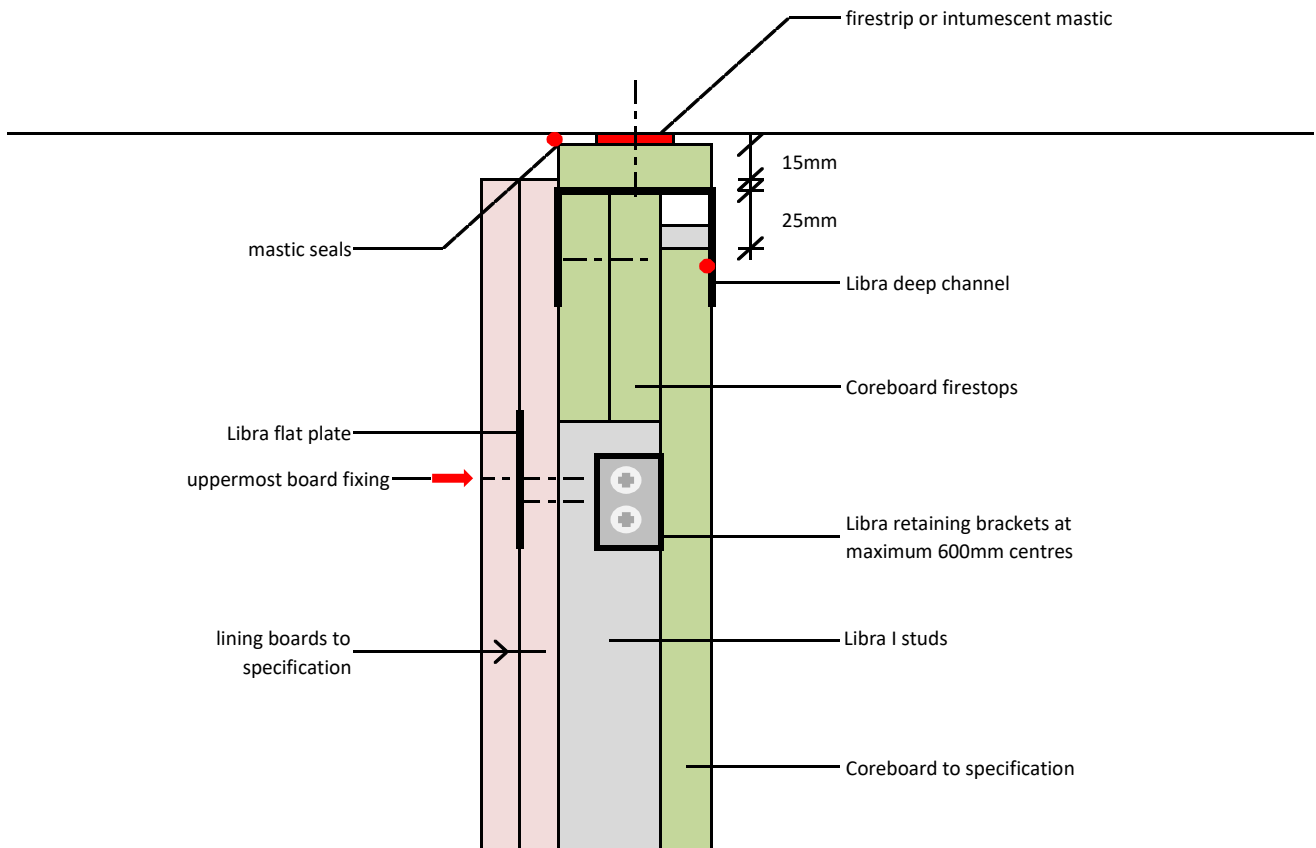
project:
Typical Detail

initials:
ML

date:
21/5/2017

drg no:
ML/TYP/040

Libra shaftwall
head detail (15mm deflection)



Notes: This drawing should be read in conjunction with the relevant sections of the manufacturers current product literature we would draw your attention to the Construction (Design and Management) Regulations 1994 and the Approved Code of Practice which detail the legal duties of clients, client's agents designers and contractors involved in construction projects.

for discussion purposes only, do not scale



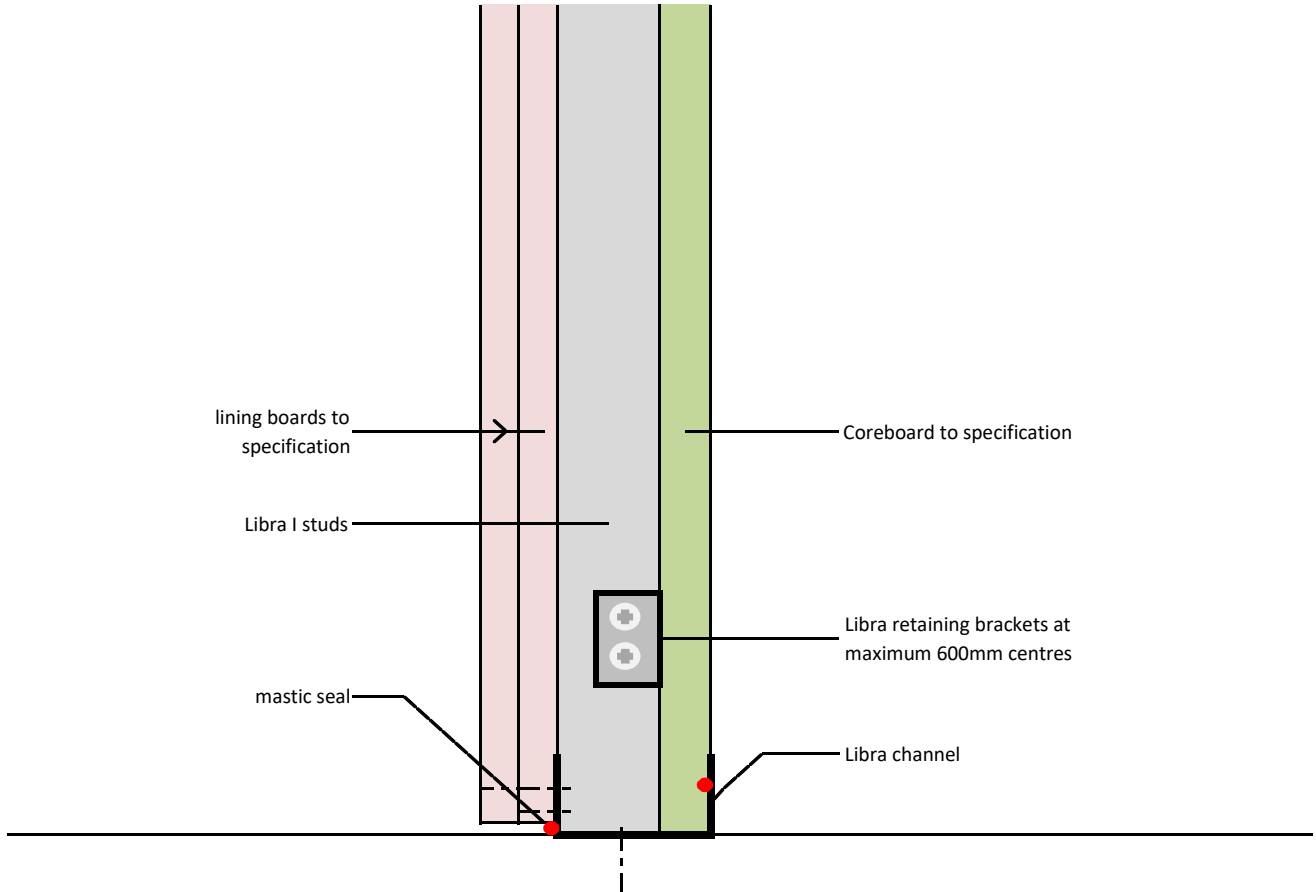
project:
Typical Detail

initials:
ML

date:
21/05/2017

dg no:
ML/TYP/041

Libra shaftwall
base detail



Notes: This drawing should be read in conjunction with the relevant sections of the manufacturers current product literature we would draw your attention to the Construction (Design and Management) Regulations 1994 and the Approved Code of Practice which detail the legal duties of clients, client's agents designers and contractors involved in construction projects.

for discussion purposes only, do not scale



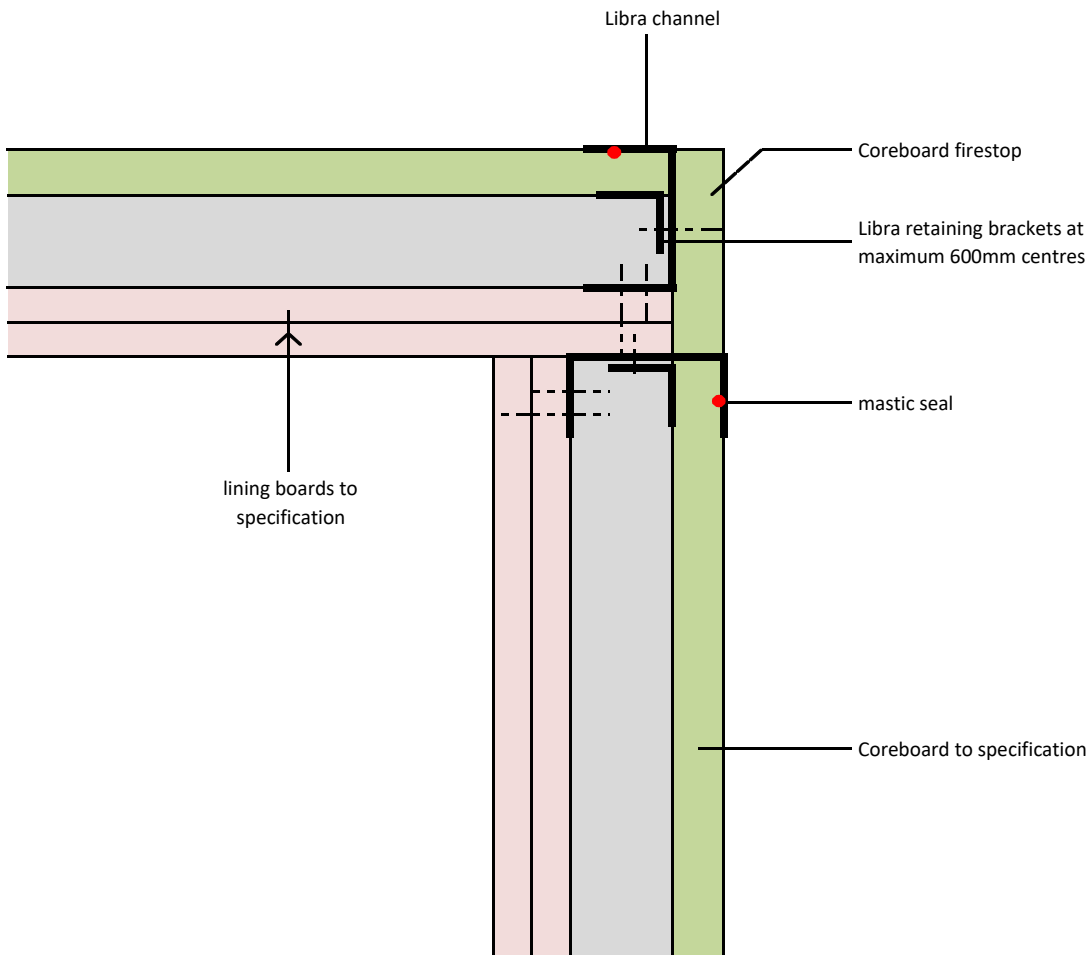
project:
Typical Detail

initials:
ML

date:
21/5/2107

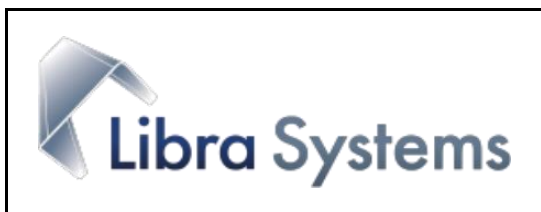
drg no:
ML/TYP/042

Libra shaftwall
internal corner



Notes: This drawing should be read in conjunction with the relevant sections of the manufacturers current product literature we would draw your attention to the Construction (Design and Management) Regulations 1994 and the Approved Code of Practice which detail the legal duties of clients, client's agents designers and contractors involved in construction projects.

for discussion purposes only, do not scale



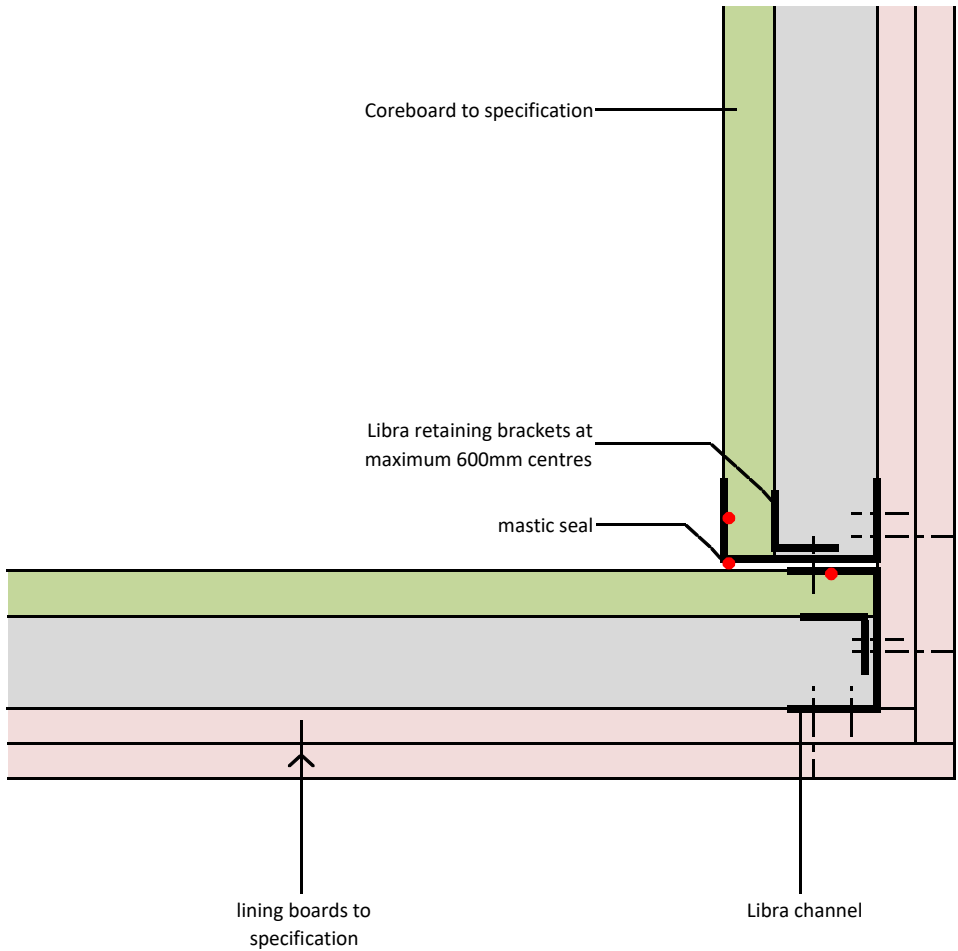
project:
Typical Detail

initials:
ML

date:
21/05/2017

drg no:
ML/TYP/043

Libra shaftwall
external corner



Notes: This drawing should be read in conjunction with the relevant sections of the manufacturers current product literature we would draw your attention to the Construction (Design and Management) Regulations 1994 and the Approved Code of Practice which detail the legal duties of clients, client's agents designers and contractors involved in construction projects.

for discussion purposes only, do not scale



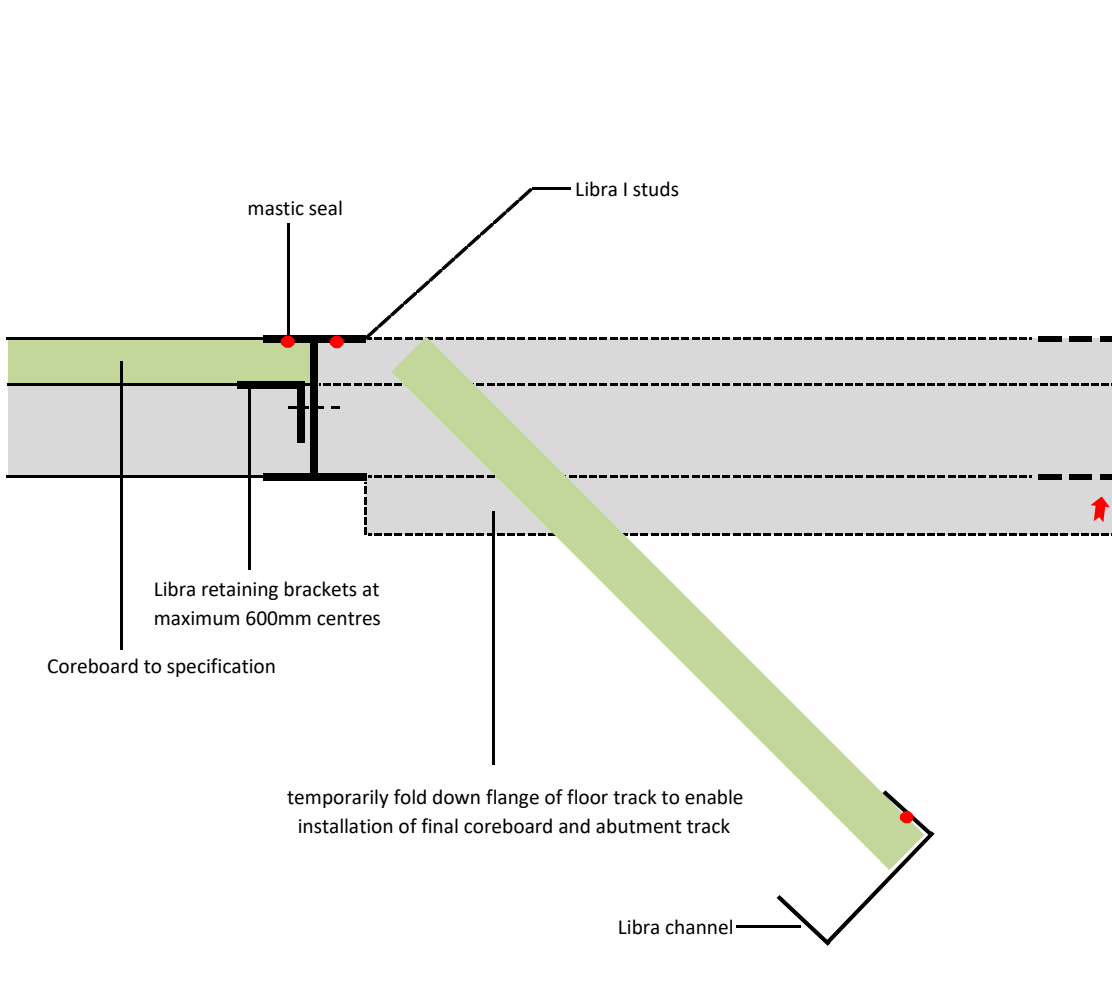
project:
Typical Detail

initials:
ML

date:
21/5/2107

drg no:
ML/TYP/044

Libra shaftwall
abutment detail (end)



Notes: This drawing should be read in conjunction with the relevant sections of the manufacturers current product literature we would draw your attention to the Construction (Design and Management) Regulations 1994 and the Approved Code of Practice which detail the legal duties of clients, client's agents designers and contractors involved in construction projects.

for discussion purposes only, do not scale



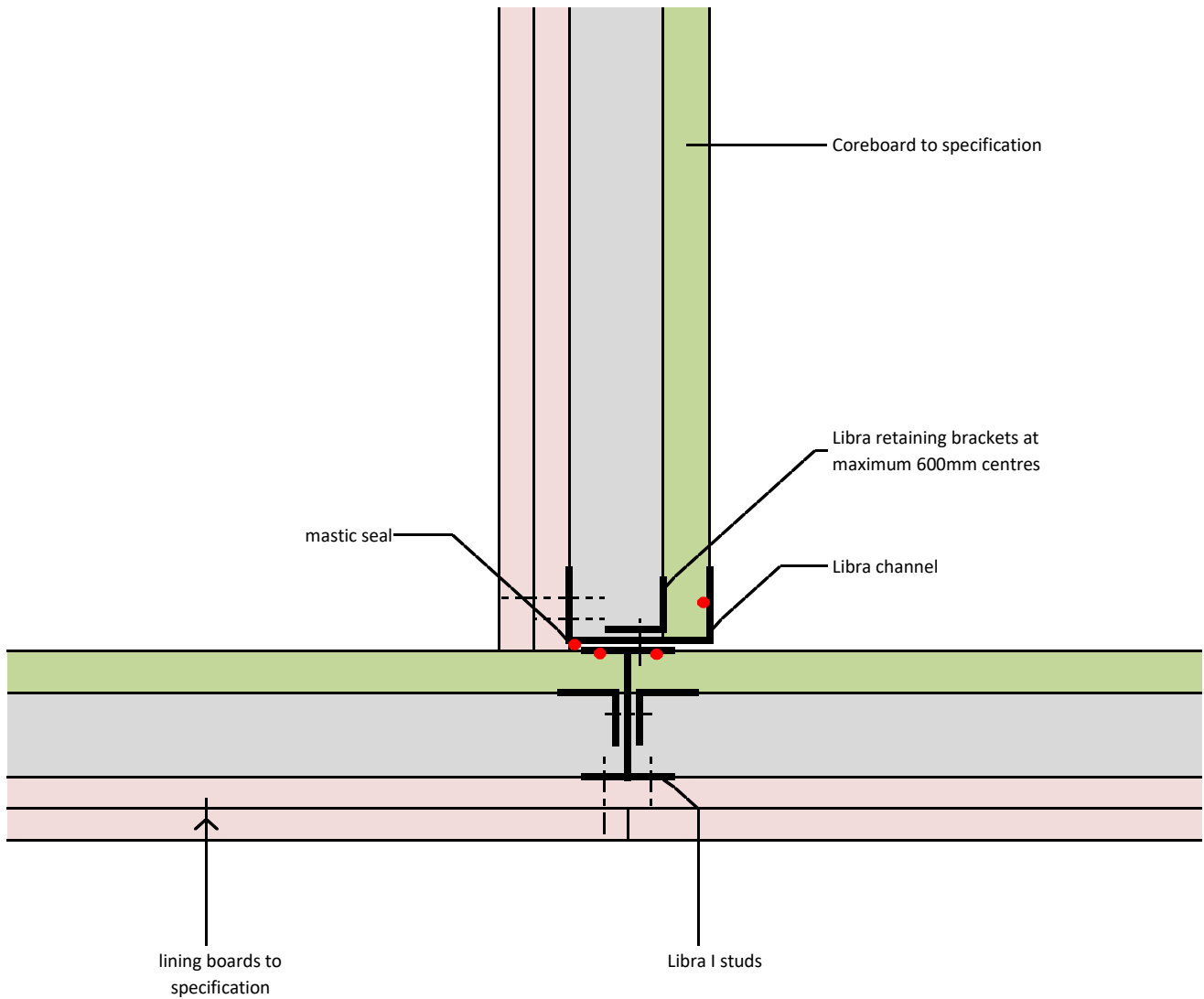
project:
Typical Detail

initials:
ML

date:
21/5/2017

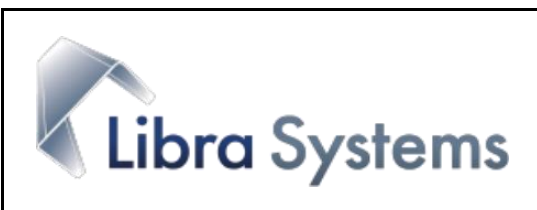
drg no:
ML/TYP/046

Libra shaftwall
T junction (shaft side)



Notes: This drawing should be read in conjunction with the relevant sections of the manufacturers current product literature we would draw your attention to the Construction (Design and Management) Regulations 1994 and the Approved Code of Practice which detail the legal duties of clients, client's agents designers and contractors involved in construction projects.

for discussion purposes only, do not scale



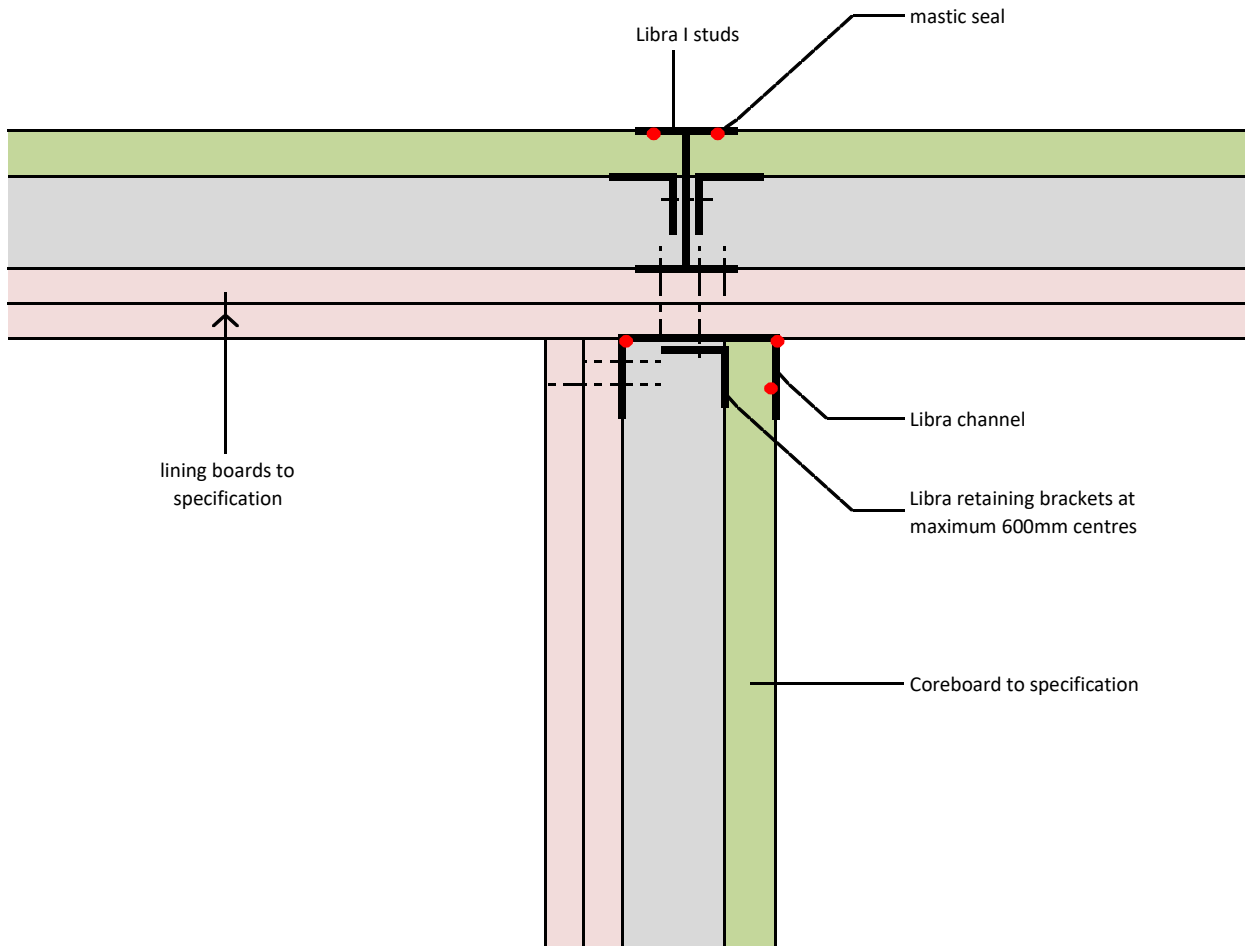
project:
Typical Detail

initials:
ML

date:
21/5/2017


drg no:
ML/TYP/047

Libra shaftwall
T junction (room side)

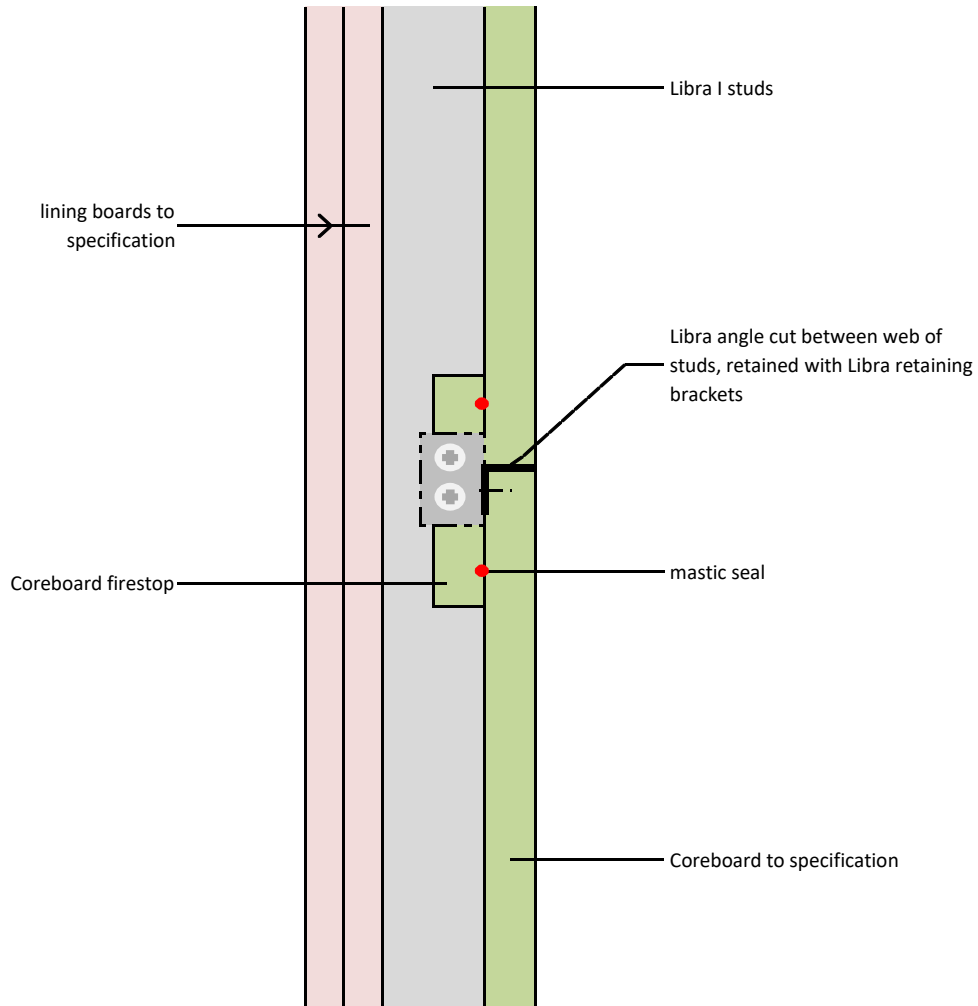


Notes: This drawing should be read in conjunction with the relevant sections of the manufacturers current product literature we would draw your attention to the Construction (Design and Management) Regulations 1994 and the Approved Code of Practice which detail the legal duties of clients, client's agents designers and contractors involved in construction projects.

for discussion purposes only, do not scale

	project: <p style="text-align: center;">Typical Detail</p>		
	initials: <p style="text-align: center;">ML</p>	date: <p style="text-align: center;">21/5/2017</p>	drg no: <p style="text-align: center;">ML/TYP/048</p>

Libra shaftwall
horizontal joint



Notes: This drawing should be read in conjunction with the relevant sections of the manufacturers current product literature we would draw your attention to the Construction (Design and Management) Regulations 1994 and the Approved Code of Practice which detail the legal duties of clients, client's agents designers and contractors involved in construction projects.

for discussion purposes only, do not scale



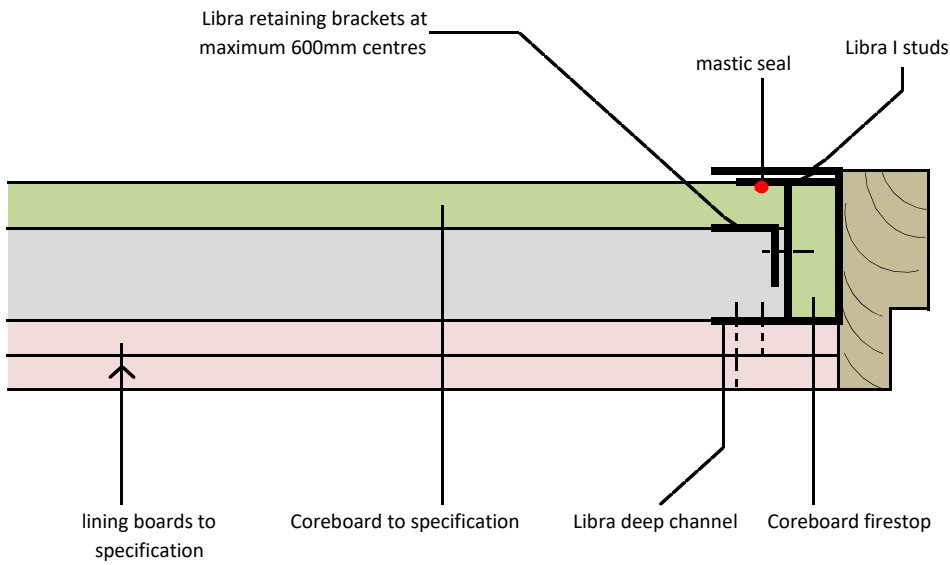
project:
Typical Detail

initials:
ML

date:
21/05/2017

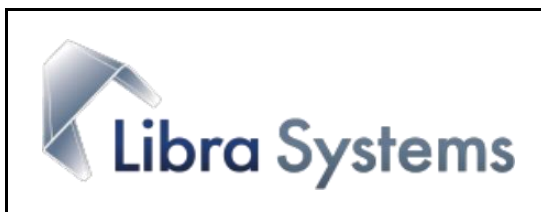
drg no:
ML/TYP/049

Libra shaftwall
door jamb



Notes: This drawing should be read in conjunction with the relevant sections of the manufacturers current product literature we would draw your attention to the Construction (Design and Management) Regulations 1994 and the Approved Code of Practice which detail the legal duties of clients, client's agents designers and contractors involved in construction projects.

for discussion purposes only, do not scale



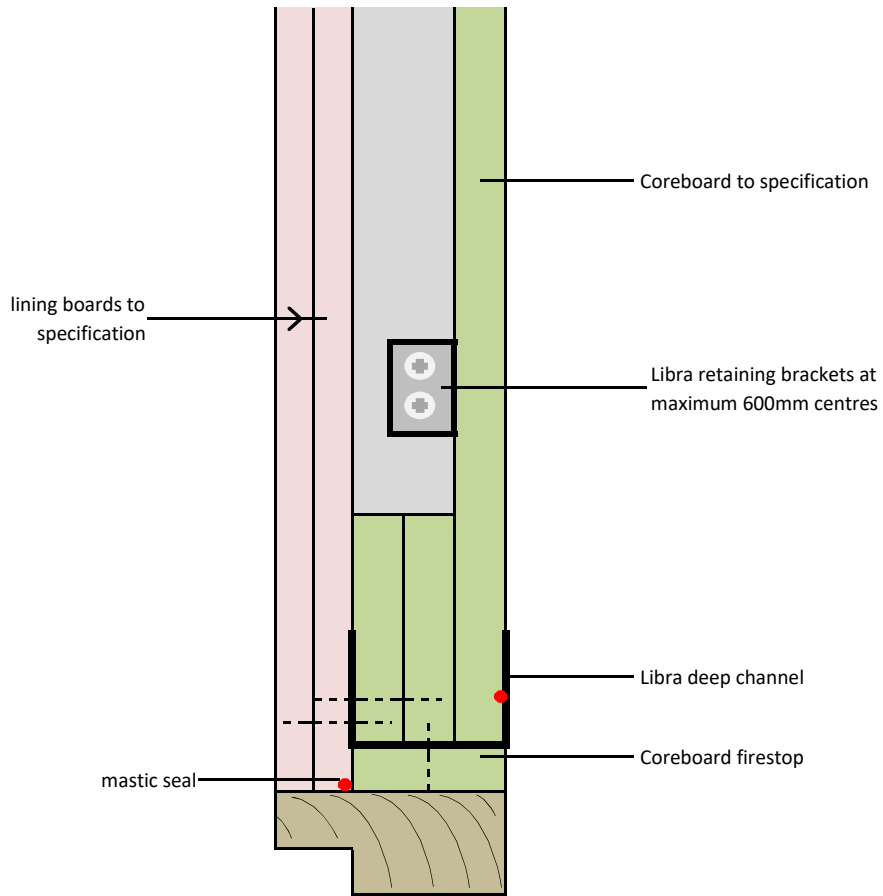
project:
Typical Detail

initials:
ML

date:
21/5/2017

drg no:
ML/TYP/050

Libra shaftwall
door head



Notes: This drawing should be read in conjunction with the relevant sections of the manufacturers current product literature we would draw your attention to the Construction (Design and Management) Regulations 1994 and the Approved Code of Practice which detail the legal duties of clients, client's agents designers and contractors involved in construction projects.

for discussion purposes only, do not scale



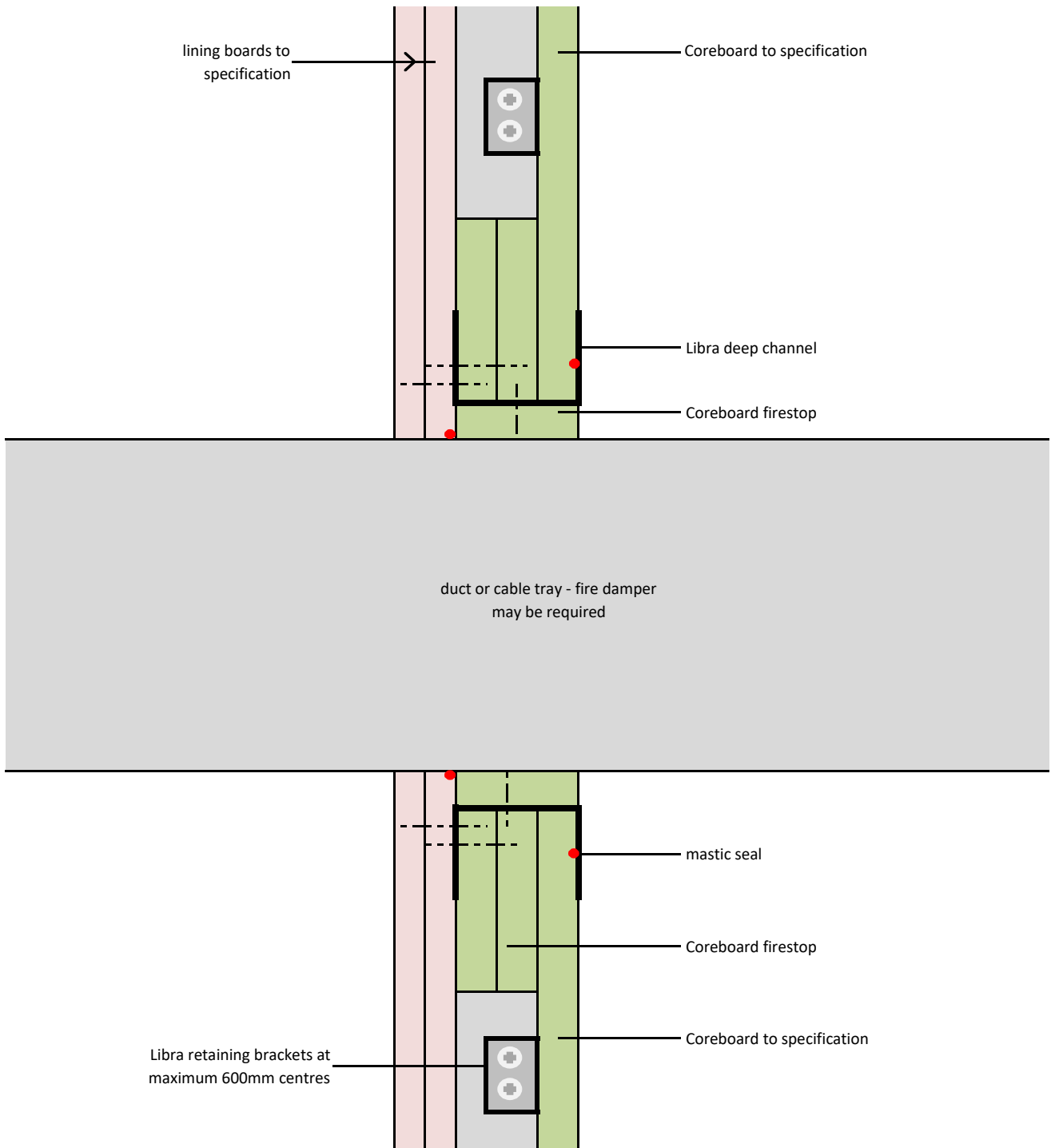
project:
Typical Detail

initials:
ML

date:
21/5/2017

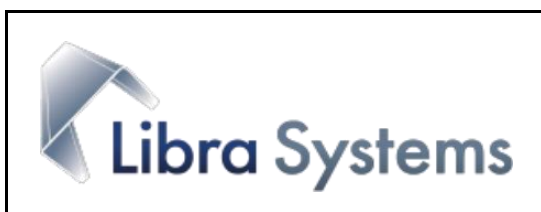
drg no:
ML/TYP/051

Libra shaftwall
duct opening (section)



Notes: This drawing should be read in conjunction with the relevant sections of the manufacturers current product literature we would draw your attention to the Construction (Design and Management) Regulations 1994 and the Approved Code of Practice which detail the legal duties of clients, client's agents designers and contractors involved in construction projects.

for discussion purposes only, do not scale



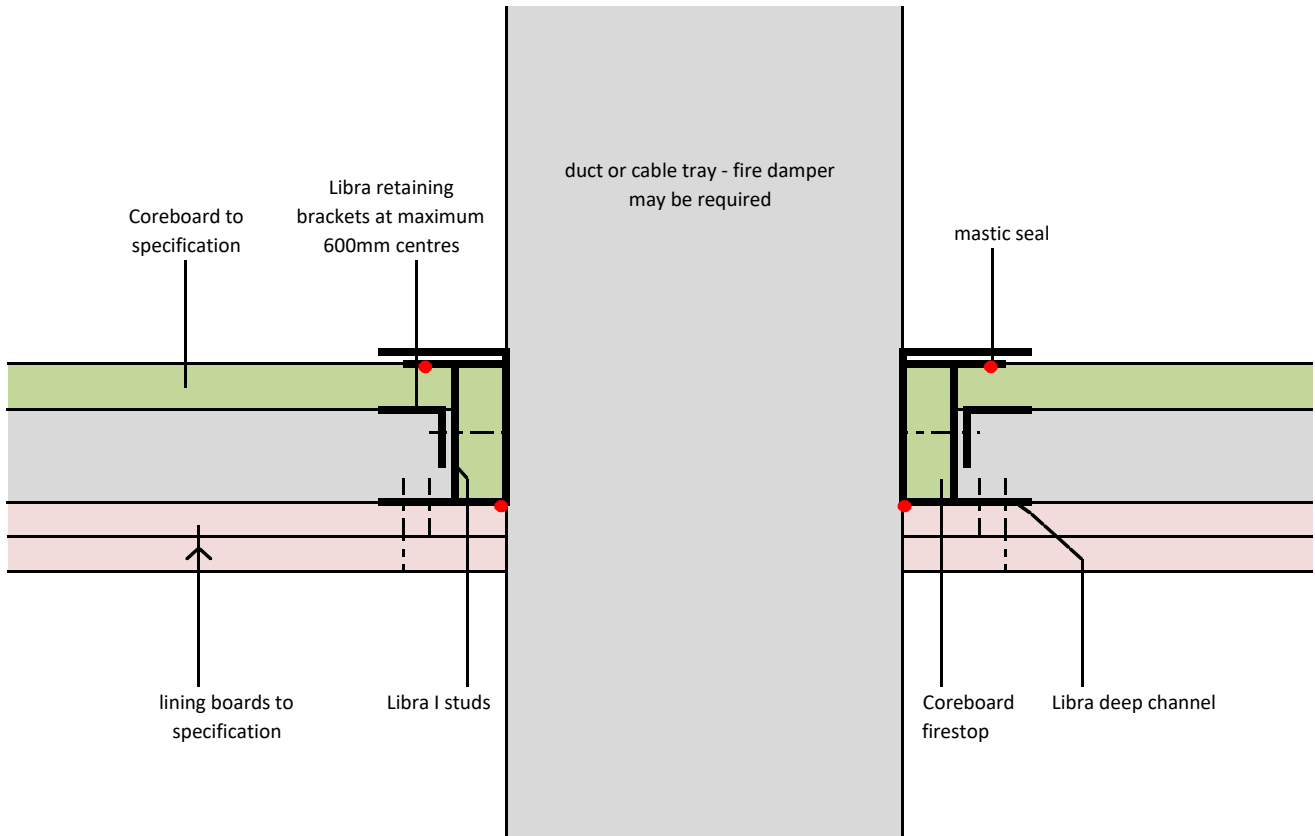
project:	Typical Detail
----------	----------------

initials:	ML
-----------	----

date:	21/5/2017
-------	-----------

drg no:	ML/TYP/052
---------	------------

Libra shaftwall
duct opening (plan)



Notes: This drawing should be read in conjunction with the relevant sections of the manufacturers current product literature we would draw your attention to the Construction (Design and Management) Regulations 1994 and the Approved Code of Practice which detail the legal duties of clients, client's agents designers and contractors involved in construction projects.

for discussion purposes only, do not scale



project:
Typical Detail

initials:
ML

date:
21/5/2017

drg no:
ML/TYP/053