



Libra Systems

Internal Partition Wall Lining System Details

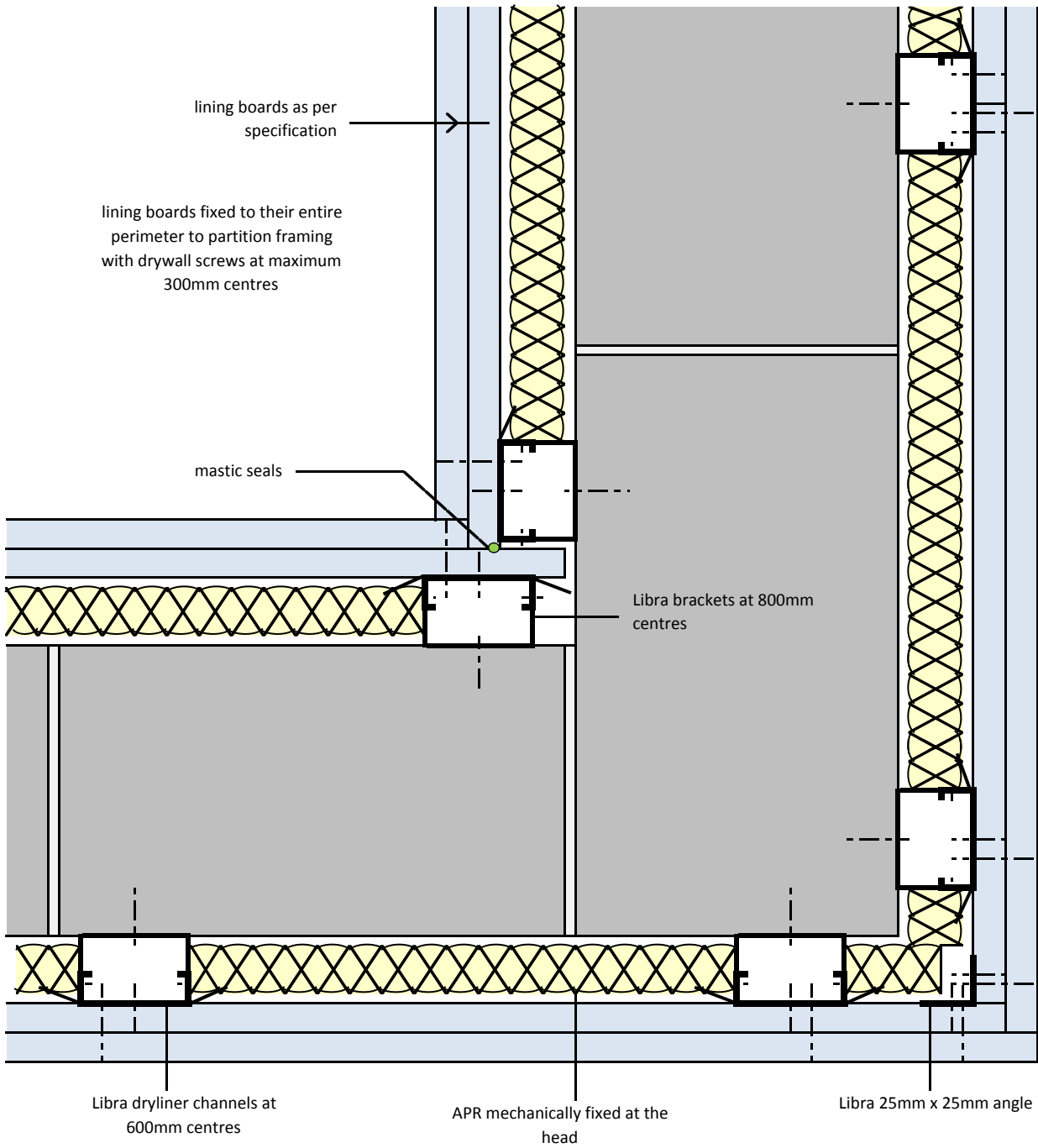


Index

Wall Lining System

ML/TYP/110	internal and external corner
ML/TYP/111	abutment detail
ML/TYP/112	head - base horizontal joint
ML/TYP/113	door jamb
ML/TYP/114	window reveal
ML/TYP/115	forming opening

**Internal and External Corners
Dryliner Lining**



Notes: This drawing should be read in conjunction with the relevant sections of the manufacturers current product literature we would draw your attention to the Construction (Design and Management) Regulations 1994 and the Approved Code of Practice which detail the legal duties of clients, client's agents designers and contractors involved in construction projects.

for discussion purposes only / do not scale



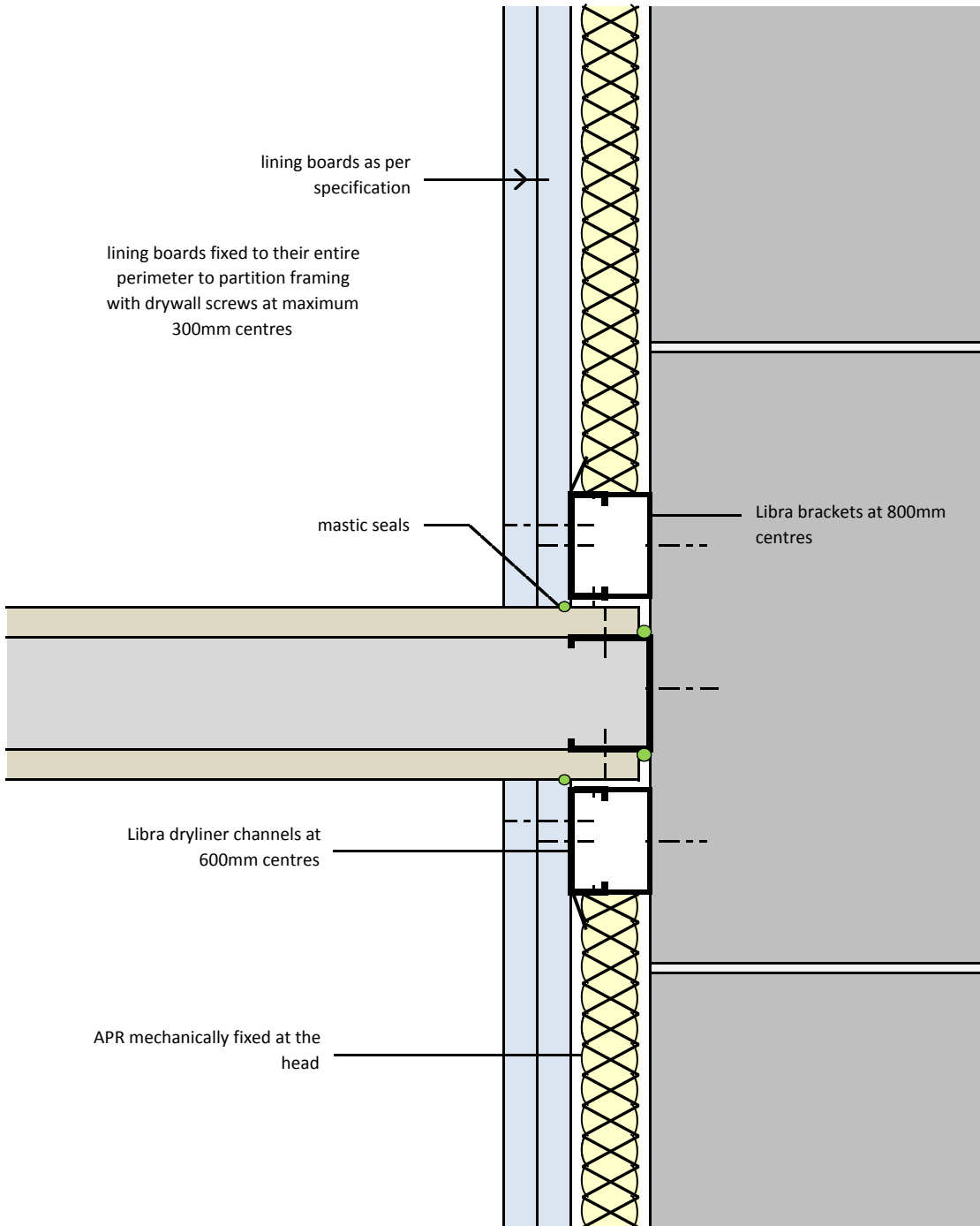
project: Typical Detail

initials: ML

date: 11/01/2017

drg no: ML/TYP/110

**Partition Abutment
Dryliner Lining**



Notes: This drawing should be read in conjunction with the relevant sections of the manufacturers current product literature we would draw your attention to the Construction (Design and Management) Regulations 1994 and the Approved Code of Practice which detail the legal duties of clients, client's agents designers and contractors involved in construction projects.

for discussion purposes only / do not scale



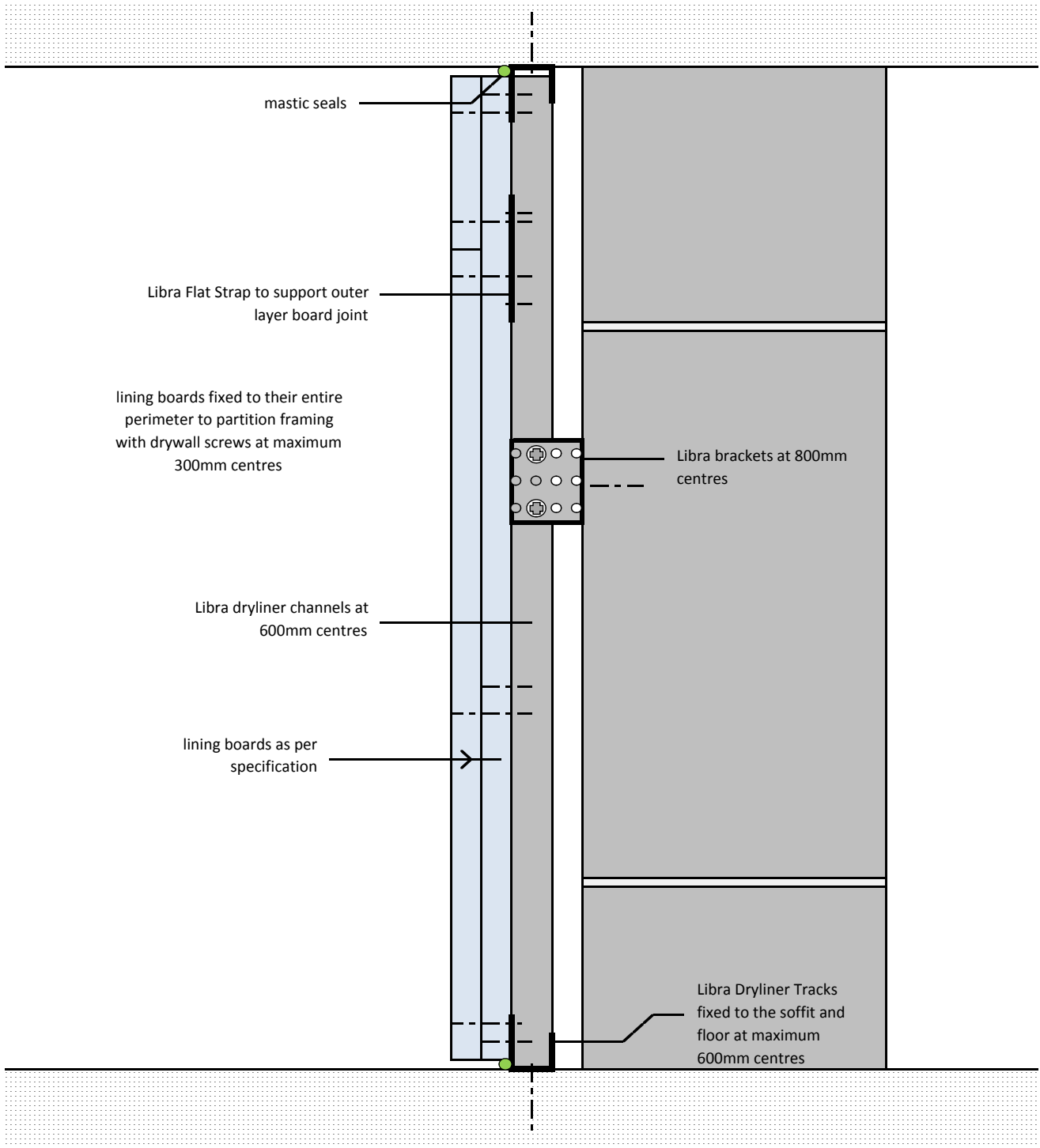
project:
Typical Detail

initials:
ML

date:
11/01/2017

drg no:
ML/TYP/111

**Head, Base and Horizontal Joint
Dryliner Lining**



Notes: This drawing should be read in conjunction with the relevant sections of the manufacturers current product literature we would draw your attention to the Construction (Design and Management) Regulations 1994 and the Approved Code of Practice which detail the legal duties of clients, client's agents designers and contractors involved in construction projects.

for discussion purposes only / do not scale



project: Typical Detail

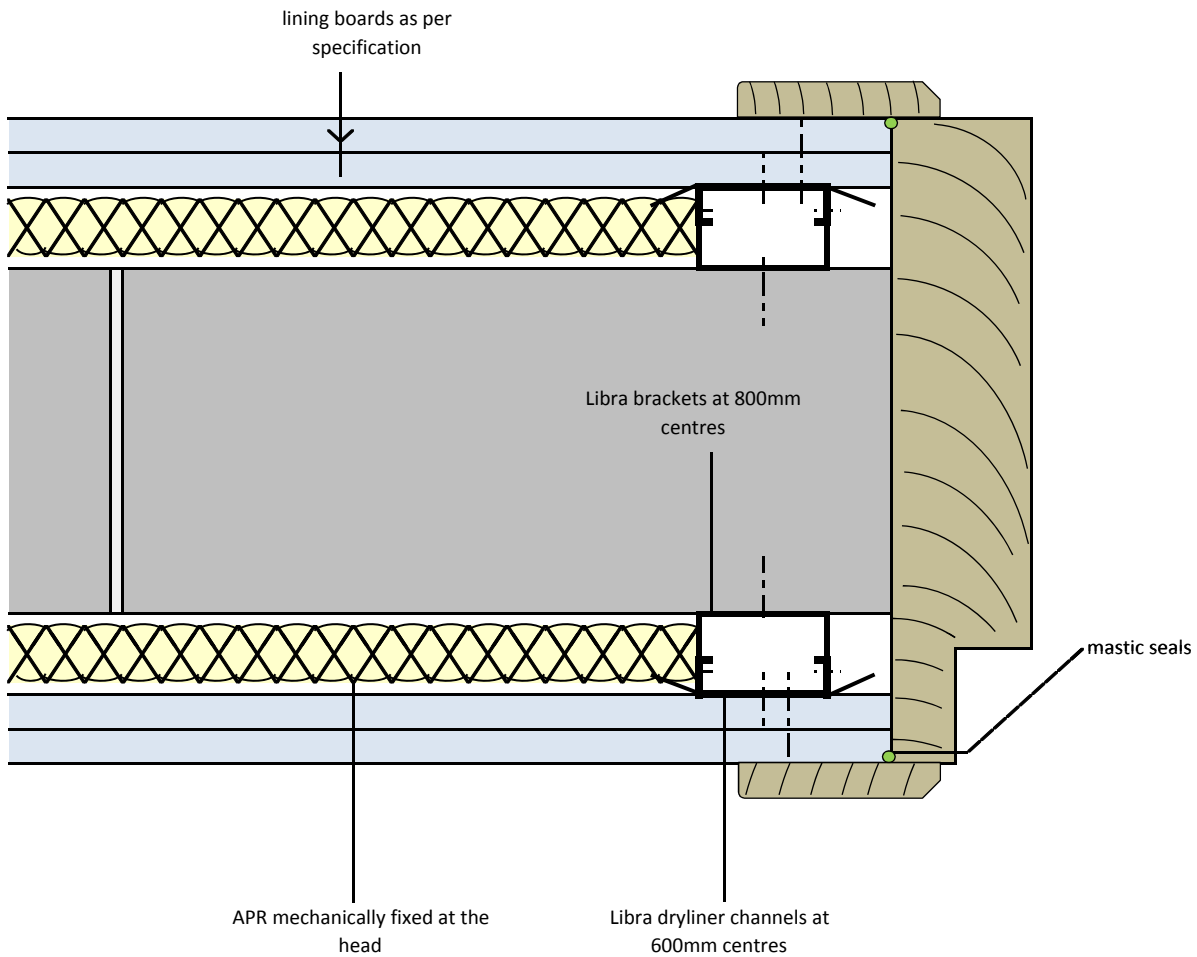
initials: ML

date: 11/01/2017

drg no: ML/TYP/112

**Door Jamb
Dryliner Lining**

lining boards fixed to their entire perimeter to partition framing with drywall screws at maximum 300mm centres



Notes: This drawing should be read in conjunction with the relevant sections of the manufacturers current product literature we would draw your attention to the Construction (Design and Management) Regulations 1994 and the Approved Code of Practice which detail the legal duties of clients, client's agents designers and contractors involved in construction projects.

for discussion purposes only / do not scale



project: Typical Detail

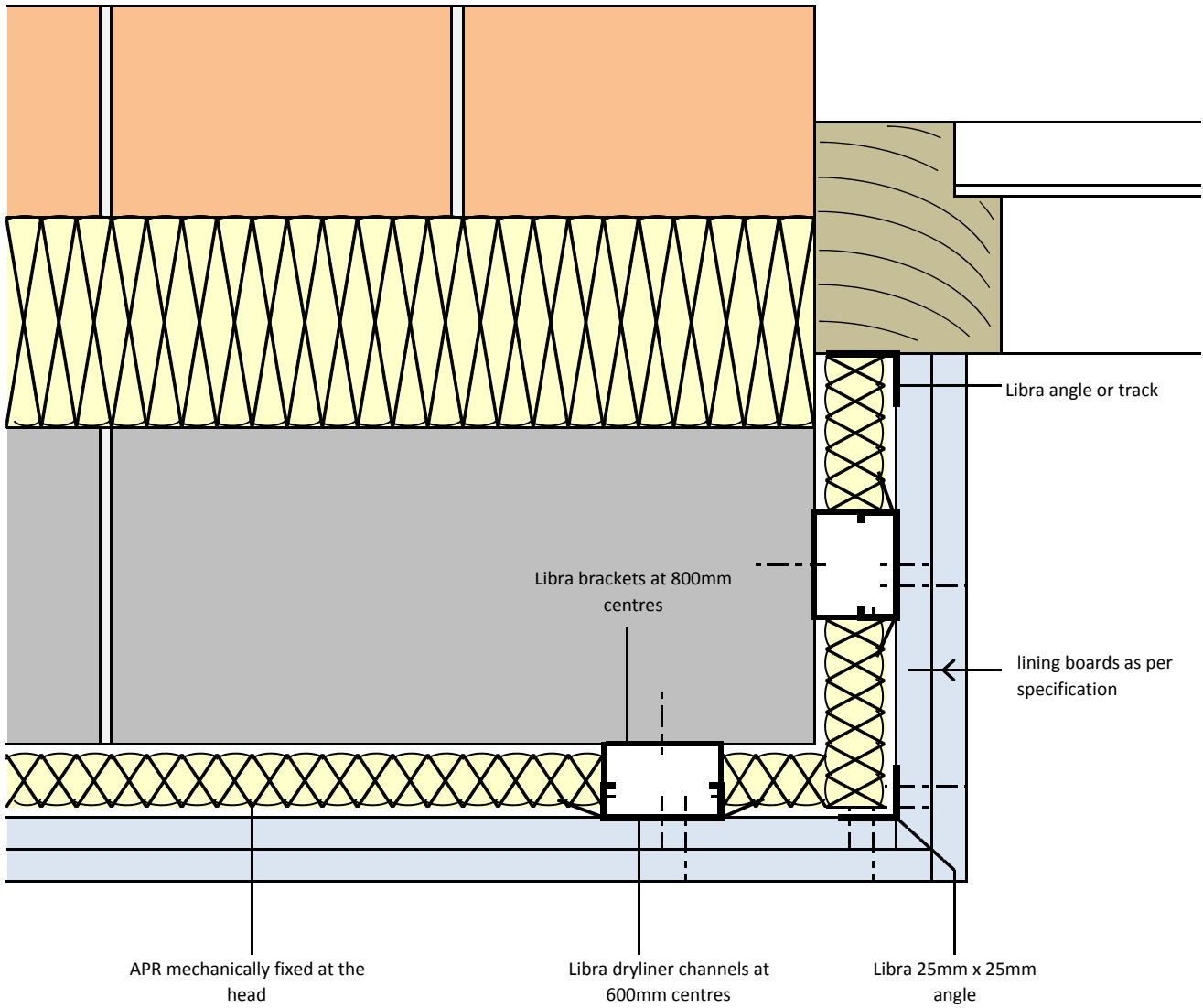
initials: ML

date: 11/01/2017

drg no: ML/TYP/113

**Window Reveal
Dryliner Lining**

lining boards fixed to their entire perimeter to partition framing with drywall screws at maximum 300mm centres



Notes: This drawing should be read in conjunction with the relevant sections of the manufacturers current product literature we would draw your attention to the Construction (Design and Management) Regulations 1994 and the Approved Code of Practice which detail the legal duties of clients, client's agents designers and contractors involved in construction projects.

for discussion purposes only / do not scale



project: Typical Detail

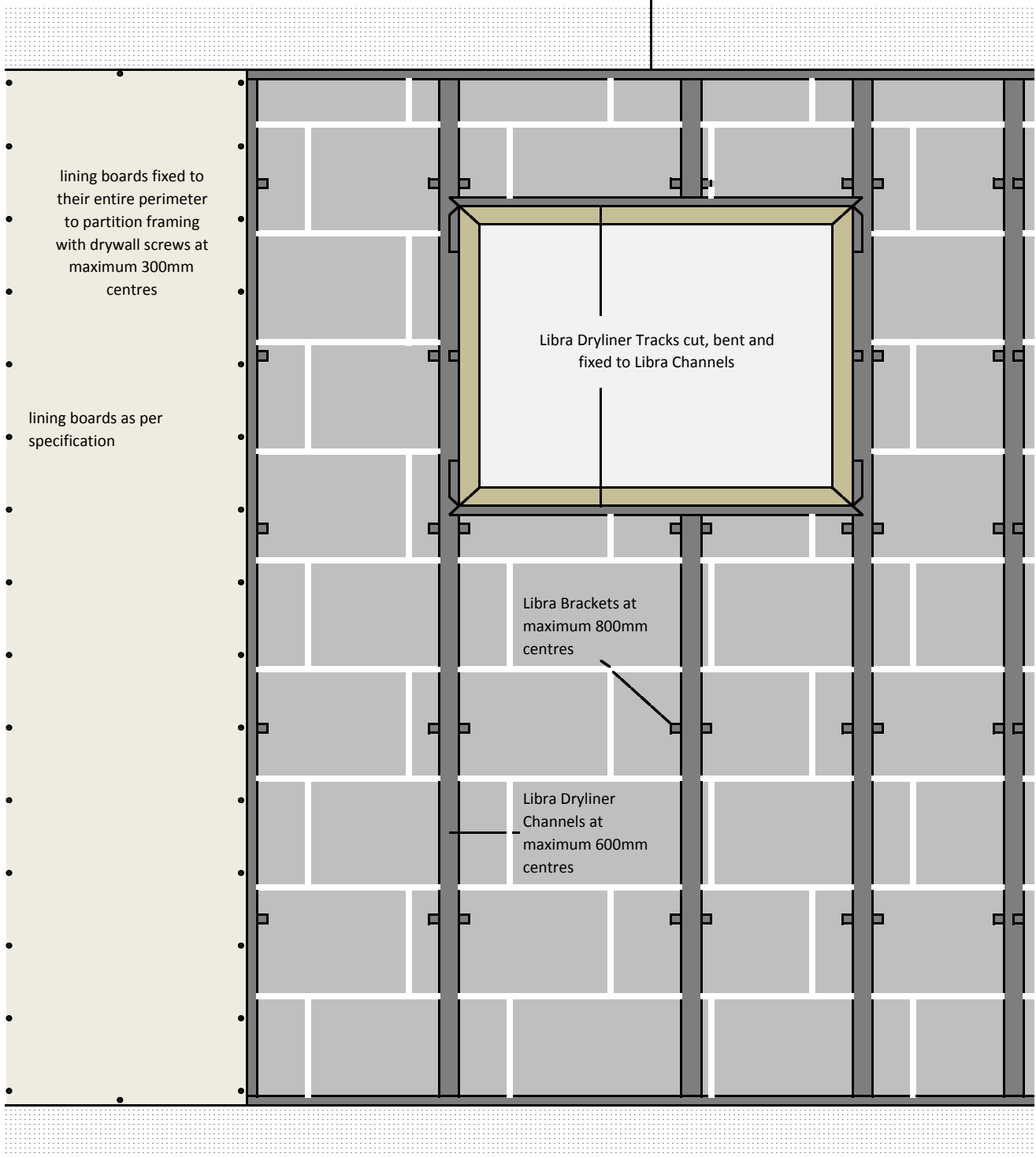
initials: ML

date: 11/01/2017

drg no: ML/TYP/114

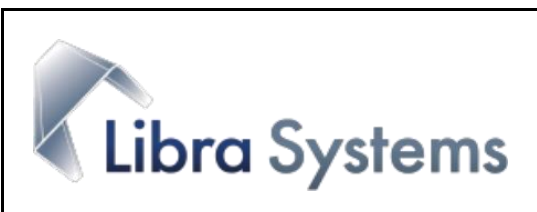
**Forming Openings
Dryliner Lining**

Libra Dryliner Tracks fixed to the soffit and floor at maximum 600mm centres



Notes: This drawing should be read in conjunction with the relevant sections of the manufacturers current product literature we would draw your attention to the Construction (Design and Management) Regulations 1994 and the Approved Code of Practice which detail the legal duties of clients, client's agents designers and contractors involved in construction projects.

for discussion purposes only / do not scale



project:
Typical Detail

initials:
ML

date:
11/01/2017

drg no:
ML/TYP/115